

<b>Position :</b>	<b>1</b>
<b>Gear series :</b>	<b>Helical gear unit</b>
<b>Type :</b>	<b>HG 80E EX IAK160</b>

**Execution according to ATEX 2014/34/EU :**

Atmosphere :	Gas and dust
Zone :	1+21
EX-Marking gear unit :	II 2G Ex h IIC T4 Gb / II 2D Ex h IIIC 125°C Db

**Operation data :**

Ambient temperature :	+20	°C
Type of operation :	S1	

**External motor data**

Motor power :	15	[kW]
Rated speed :	1450	[rpm]

**Gear data :**

Max. perm. thermal power limit at +20 °C and S1 operation :	19	[kW]
Output speed :	445	[rpm]
Output torque :	316	[Nm]
As a result of the selected input type (adapter or input shaft unit) the output torque was reduced because of torque losses!		
Rated torque :	419	[Nm]
Service factor :	1.35	
Gear stages :	1	
Ratio :	3.26	
ZT-Code :	0815/23075	
Circumferential backlash (min-max) :	7' - 10'	
Reduced circumferential backlash (min-max) (OPTION) :	7' - 10'	
Perm. input torque at fB1 :	128.5	[Nm]
Max. perm. input speed :	2800	[rpm]
Mounting position :	B3	
Output shaft :	Ø 40 k6 x 80	[mm]
Keyway :	DIN6885.1	
Output shaft material :	C45E (1.1191)	
Vent plug :	0.2 bar (Standard)	
Painting :	LC1 - Indoor installation, neutral atmosphere NDFT 60 µm (C1 - DIN EN ISO 12944-5)	
Color :	RAL 7011 (Iron grey)	
Weight :	66.3	[kg]

**Input side :**


Type :	IEC coupling adapter 160
Input shaft :	Ø 42 k6 x 110 mm

Input flange :	Ø350 mm according to IEC	
Torque losses :	2	[Nm]

---

**Further executions gear unit :**

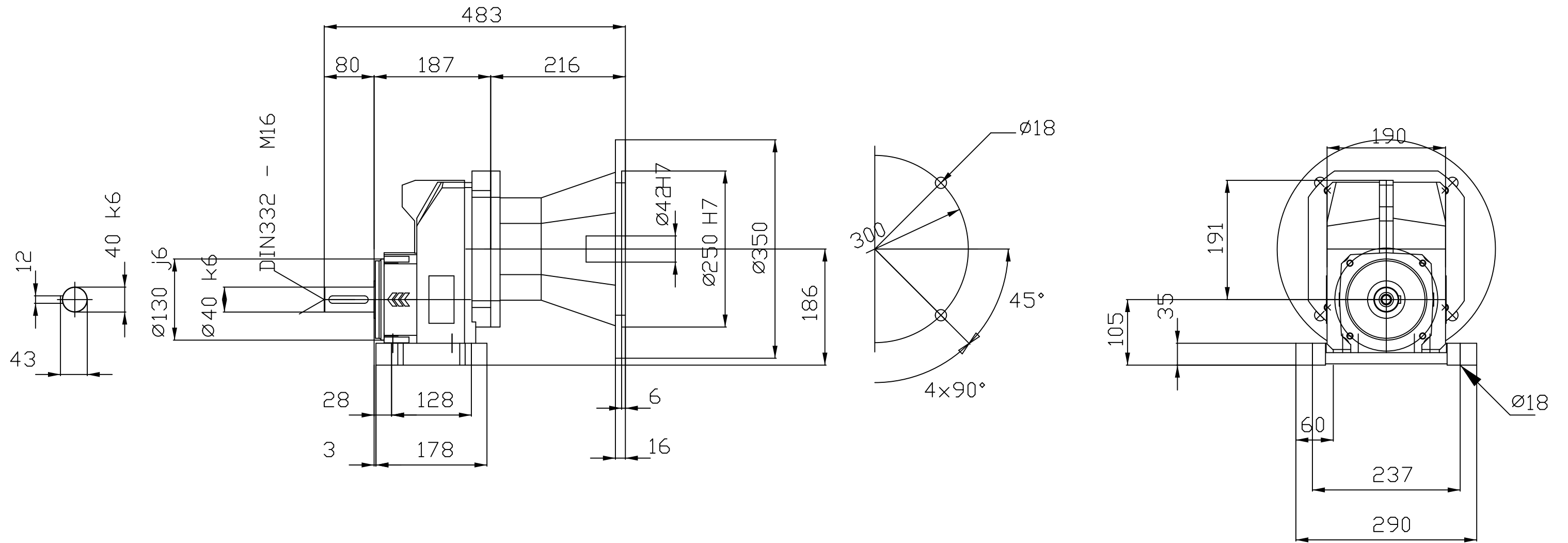
Lubricant :	Mineral oil - CLP ISO VG 220
-------------	------------------------------

**3D Model (STEP) :** 

**Dimension sheet (PDF):** 

**3D Model (3D-PDF) :**

To view the 3D PDF correctly you need Acrobat Reader®.  
You can download it free of charge at <https://get.adobe.com/uk/reader/>.



Dimension sheet is proportional.  
 All dimension in mm.  
 Technical data are subject to change.

Dim. sheet no.:	
Date:	7.2.2024
cat4CAD:	6.0.2598.442

Notes:	
Position:	1
Type:	HG_80E_EX_IAK160

